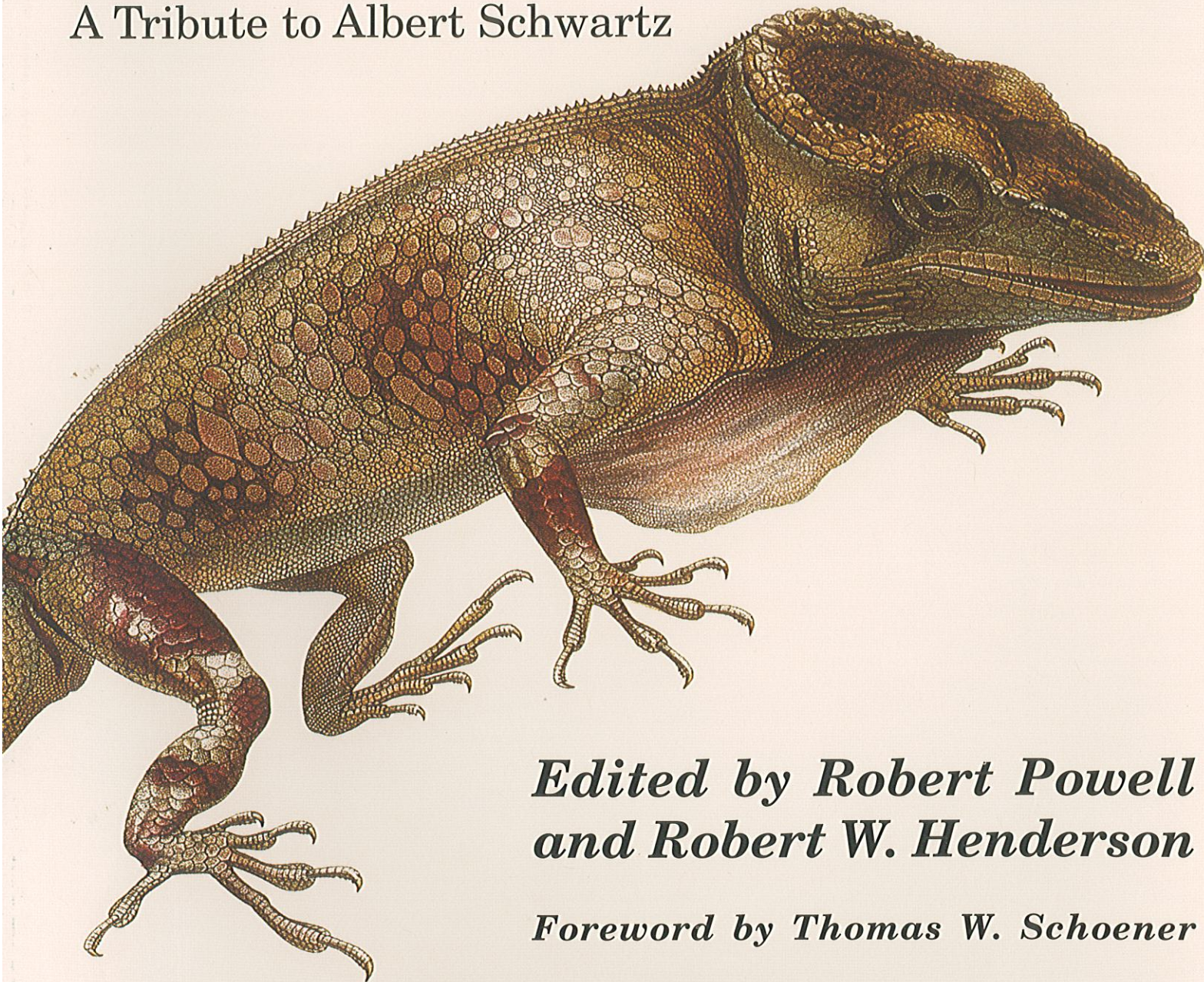


Contributions to
*West Indian
Herpetology*

A Tribute to Albert Schwartz



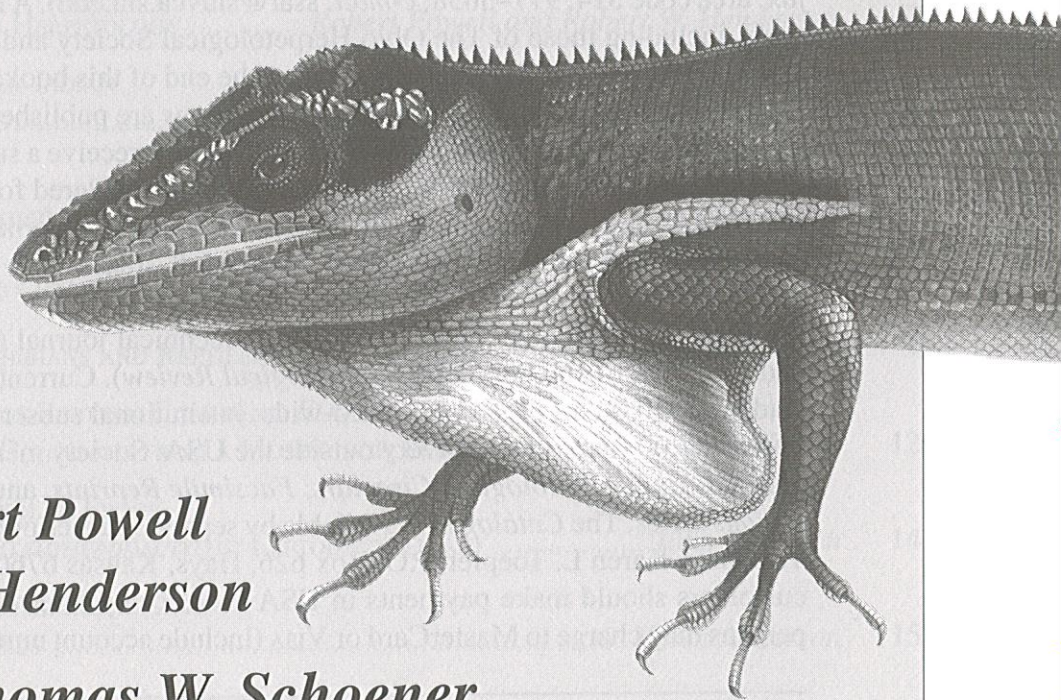
*Edited by Robert Powell
and Robert W. Henderson*

Foreword by Thomas W. Schoener

Published by the Society for the Study of Amphibians and Reptiles

Contributions to
*West Indian
Herpetology*

A Tribute to Albert Schwartz



*Edited by Robert Powell
and Robert W. Henderson*

Foreword by Thomas W. Schoener

Published by the Society for the Study of Amphibians and Reptiles • 1996

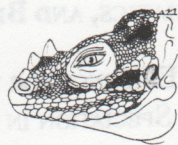


TABLE OF CONTENTS

PATRONS OF THIS VOLUME	8
FOREWORD	<i>Thomas W. Schoener</i> 9
INTRODUCTION	<i>Robert Powell and Robert W. Henderson</i> 11
ALBERT SCHWARTZ	
REMEMBRANCES OF ALBERT SCHWARTZ:	
Albert Schwartz: Dawning of a Herpetologist	<i>William E. Duellman</i> 15
Recollections of Albert Schwartz	<i>Richard Thomas</i> 16
A Singular Devotion: Albert Schwartz and the West Indies	<i>Robert W. Henderson</i> 18
HERPETOLOGICAL PUBLICATIONS OF ALBERT SCHWARTZ	<i>Robert W. Bourgeois</i> 21
WEST INDIAN HERPETOLOGY	
A BRIEF HISTORY OF WEST INDIAN HERPETOLOGY	<i>Robert Powell and Robert W. Henderson</i> 29
AN ANNOTATED CHECKLIST OF WEST INDIAN AMPHIBIANS AND REPTILES	<i>Robert Powell, Robert W. Henderson, Kraig Adler, and Harold A. Dundee</i> 51
COLOR PLATES OF WEST INDIAN AMPHIBIANS AND REPTILES	following page 94
EVOLUTION, SYSTEMATICS, AND BIOGEOGRAPHY	
THE ORIGIN OF WEST INDIAN AMPHIBIANS AND REPTILES	<i>S. Blair Hedges</i> 95
SYSTEMATICS AND BIOGEOGRAPHY OF EASTERN CARIBBEAN <i>ELEUTHERODACTYLUS</i> (ANURA: LEPTODACTYLIDAE): CONSENSUS FROM A MULTIDISCIPLINARY APPROACH ...	<i>Hinrich Kaiser</i> 129
THE RELATIONSHIPS OF THE HISPANIOLAN FROGS OF THE SUBGENUS <i>PELORIUS</i> (<i>ELEUTHERODACTYLUS</i> : LEPTODACTYLIDAE)	<i>John D. Lynch</i> 141
A KARYOLOGICAL PERSPECTIVE ON THE MONOPHYLY OF THE HYLID GENUS <i>OSTEOPILUS</i>	<i>Karen Anderson</i> 157
CURRENT STATUS OF BIOGEOGRAPHY OF THE WEST INDIAN TURTLES IN THE GENUS <i>TRACHEMYS</i> (EMYDIDAE)	<i>Michael E. Seidel</i> 169
RELATIONSHIPS AMONG WEST INDIAN GECKOS OF THE GENUS <i>SPHAERODACTYLUS</i> : A PRELIMINARY ANALYSIS OF MITOCHONDRIAL 16S RIBOSOMAL RNA SEQUENCES ...	<i>Carla Ann Hass</i> 175

EVOLUTION, SYSTEMATICS, AND BIOGEOGRAPHY (continued)

- CAREENING ISLAND AND THE GOAT ISLANDS: EVIDENCE FOR THE ARID-INSULAR
INVASION WAVE THEORY OF DICHOPATRIC SPECIATION IN JAMAICA *James Lazell* 195
- CROSSING BOND'S LINE: THE HERPETOFAUNAL EXCHANGE
BETWEEN THE EASTERN CARIBBEAN AND MAINLAND SOUTH AMERICA *John C. Murphy* 207

ECOLOGY AND BEHAVIOR

- THE ROLE OF AMPHIBIANS AND REPTILES
IN A WEST INDIAN RAIN FOREST FOOD WEB..... *Douglas P. Reagan* 217
- PATTERNS OF PARENTAL CARE IN FROGS OF THE GENUS *ELEUTHERODACTYLUS* *Daniel S. Townsend* 229
- MATE SELECTION IN THE PUERTO RICAN FROG, *ELEUTHERODACTYLUS COQUI* *Pamela T. Lopez* 241
- BIOLOGY OF THE PUERTO RICAN CAVE-DWELLING FROG, *ELEUTHERODACTYLUS COOKI*,
AND SOME RECOMMENDATIONS FOR ITS CONSERVATION *Rafael L. Joglar,*
Patricia A. Burrowes, and Neftalí Rios 251
- LARVAL HABITAT, ECOLOGY, AND PARENTAL INVESTMENT
OF *OSTEOPILUS BRUNNEUS* (HYLIDAE) *Rebecca L. Thompson* 259
- OCCURRENCE OF THE NEMATODE *SKRJABINOPTERA SCELOPORI* IN THE CUBAN TREEFROG,
OSTEOPILUS SEPTENTRIONALIS: MAINLAND AND ISLAND COMPARISONS *Walter E. Meshaka, Jr.* 271
- THE EVOLUTION OF SEXUAL SIZE DIMORPHISM IN THE TEIID LIZARD
AMEIVA PLEI: A TEST OF ALTERNATIVE HYPOTHESES *Ellen J. Censky* 277
- MORPHOLOGY, ECOLOGY, AND BEHAVIOR OF THE TWIG ANOLE,
ANOLIS ANGUSTICEPS *Duncan J. Irschick and Jonathan B. Losos* 291
- A TEST OF ASSORTATIVE MATING BETWEEN SIBLING LIZARD SPECIES,
ANOLIS WEBSTERI AND *A. CAUDALIS*, IN HAITI *Thomas A. Jenssen* 303
- EVIDENCE OF SPATIAL NICHE PARTITIONING BY A HISPANIOLAN LIZARD COMMUNITY
IN A XERIC HABITAT *Robert Powell, John S. Farmerlee, Jr., and Donald D. Smith* 317
- DIETS OF WEST INDIAN RACERS (COLUBRIDAE: *ALSOPHIS*):
COMPOSITION AND BIOGEOGRAPHIC IMPLICATIONS *Robert W. Henderson and Richard A. Sajdak* 327
- ECOLOGICAL PATTERNS IN GREATER ANTILLEAN MACROSTOMATAN SNAKE ASSEMBLAGES,
WITH COMMENTS ON BODY-SIZE EVOLUTION IN *EPICRATES* (BOIDAE).... *Javier A. Rodríguez-Robles*
and Harry W. Greene 339

CONSERVATION

- SPECIES RICHNESS AND BIOGEOGRAPHY OF THE HERPETOFAUNA IN THE
EXUMA CAYS LAND AND SEA PARK, BAHAMAS *C. Kenneth Dodd, Jr. and Richard Franz* 359
- DECLINING AMPHIBIAN POPULATIONS IN PUERTO RICO *Rafael L. Joglar and Patricia A. Burrowes* 371
- THE CURRENT STATUS OF SEA TURTLES IN HAITI *José A. Ottenwalder* 381

CONSERVATION (continued)

CONSERVATION STRATEGY FOR THE JAMAICAN IGUANA, <i>CYCLURA COLLEI</i>	<i>Peter Vogel, Richard Nelson, and Rhema Kerr</i>	395
CONSERVATION OF <i>EPICRATES MONENSIS</i> ON THE SATELLITE ISLANDS OF PUERTO RICO	<i>Peter J. Tolson</i>	407
<i>CORALLUS HORTULANUS</i> (SERPENTES: BOIDAE) IN THE POST-COLUMBIAN WEST INDIES: NEW HABITATS, NEW PREY SPECIES, AND NEW PREDATORS	<i>Robert W. Henderson, R. Allan Winstel, and Joel Friesch</i>	417
CONSERVATION OF THE AMERICAN CROCODILE (<i>CROCODYLUS ACUTUS</i>) IN THE DOMINICAN REPUBLIC	<i>Andreas Schubert and Gloria Santana</i>	425

ABSTRACTS

ABSTRACTS OF ADDITIONAL PAPERS PRESENTED AT THE SYMPOSIUM IN HONOR OF ALBERT SCHWARTZ:

Pre-Columbian Human Influences on the Biogeography of Amphibians and Reptiles in the Yucatan Peninsula	<i>Julian C. Lee</i>	435
Population Differentiation of <i>Iguana delicatissima</i> and <i>I. iguana</i> in the Lesser Antilles	<i>Mark L. Day and Roger S. Thorpe</i>	436
Long-term Study of Activity Patterns of Puerto Rican Rain Forest Frogs	<i>Margaret M. Stewart</i>	437
Developmental Migrations and Habitat Use of Green Turtles in the Bahamas	<i>Karen A. Bjorndal and Alan B. Bolten</i>	440
Harmful Prey Aversion in Hatchling <i>Anolis lineatopus</i> : Learning the Good Things First.....	<i>Peter Vogel</i>	441
Anoline Diversity in Three Differentially Altered Habitats in the Sierra de Baoruco, Dominican Republic, Hispaniola	<i>Lori A. Lenart and Scott P. Sowell</i>	442
Learning and Memory in <i>Anolis</i> Lizards	<i>Sharoni Shafir and Jonathan Roughgarden</i>	443
The Relationship between Habitat Use and Sexual Dimorphism among Caribbean Anoles	<i>Marguerite A. Butler and Jonathan B. Losos</i>	444
Social Control of Male Reproductive Success in <i>Ameiva exsul</i>	<i>Allen R. Lewis, Grissell Tirado, Antonio Aponte, Javier Blanco, and José Sepulveda</i>	445

INDEX

INDEX TO SCIENTIFIC NAMES		451
---------------------------------	--	-----

SERIES EDITOR'S NOTE

The Society is grateful to Robert Powell and Robert W. Henderson for organizing the 1994 symposium which provided the basis for this volume and for their careful editing of the manuscripts. We are also obliged to the persons and organizations whose financial contributions have made possible the inclusion of the color plates; they are listed on the patrons' page (page 8). The series editor thanks Richard Glor for his editorial assistance.

The frontispiece, a photograph of Albert Schwartz taken in the 1970s, is provided through the courtesy of Michael H. Strahm. The illustration on the title page is of *Anolis equestris* of Cuba, drawn by Jean Gabriel Prêtre (from Ramón de la Sagra's "Historia Física, Política y Natural de la Isla de Cuba," Paris, 1838–1861). The headpiece to the chapters was drafted by Christopher L. Lane; it depicts *Cyclura cornuta* from the Dominican Republic. The tailpiece to each chapter figures *Eleutherodactylus schwartzi* of the Virgin Islands; it was portrayed by Karen Bertrand.

CONTRIBUTIONS TO HERPETOLOGY, VOLUME 12

KRAIG ADLER, *Editor*

TIMOTHY D. PERRY, *Associate Editor*

Volumes in the *Contributions to Herpetology* series can be purchased from the Publications Secretary, Robert D. Aldridge, Department of Biology, St. Louis University, 3507 Laclede, St. Louis, Missouri 63103, USA (*telephone*: area code 314, 977–3910 or 977–3916; *fax*: area code 314, 977–3658; *e-mail*: ssar@sluvca.slu.edu). A list of all Society publications, including those of The Ohio Herpetological Society and the *Catalogue of American Amphibians and Reptiles*, is printed at the end of this book; additional copies of this list are available from Dr. Aldridge. *Contributions* are published irregularly and ordered by separate subscription, although Society members receive a substantial pre-publication discount. Authors who wish to have manuscripts considered for publication in the *Contributions* series should contact the Editor: Kraig Adler, Cornell University, Section of Neurobiology and Behavior, Seeley G. Mudd Hall, Ithaca, New York 14853–2702, USA.

Members of the Society receive a quarterly technical journal (*Journal of Herpetology*) and a quarterly news-journal (*Herpetological Review*). Currently, dues are us\$30.00 for students, \$40.00 for all others, world-wide; institutional subscriptions are \$70.00. Additional \$30.00 for airmail delivery outside the USA. Society members receive substantial discounts on *Herpetological Circulars*, *Facsimile Reprints*, and on books in the *Contributions* series. The *Catalogue* is available by separate subscription. Apply to the Society's Treasurer, Karen L. Toepfer, P.O. Box 626, Hays, Kansas 67601–0626, USA. Overseas customers should make payments in USA funds or by International Money Order. All persons may charge to MasterCard or VISA (include account number and expiration date).

© 1996 Society for the Study of Amphibians and Reptiles

Library of Congress Catalog Number: 95–71882. ISBN: 0–916984–37–0.

Production specifications are given on the last page of this book.